

A diagram showing a 2x2 grid. The top-left cell is labeled 'A', the top-right cell is labeled 'B', the bottom-left cell is labeled 'C', and the bottom-right cell is labeled 'D'.

PORCH ON-SITE BY OTHERS
ROOF MATERIALS SHIP-LOOSE BY FACTORY

WEB SITE:
EXCELHOMES.COM

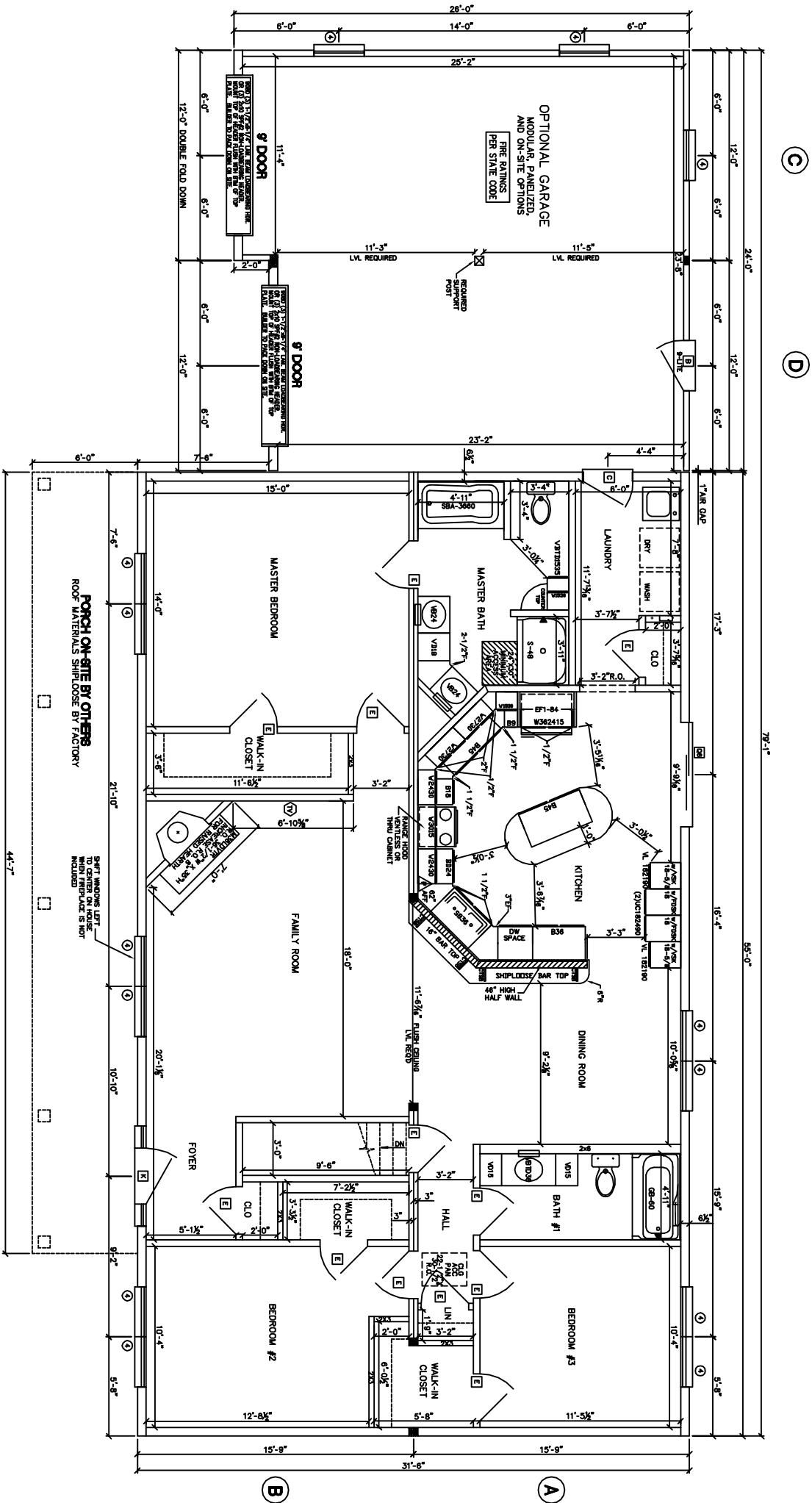
THIS DOCUMENT AND
THE SUBJECT MATTER
CONTAINED HEREIN IS
PROPRIETARY AND
MAY NOT BE
REPRODUCED
WITHOUT THE WRITTEN
PERMISSION OF
EXCEL HOMES LLC

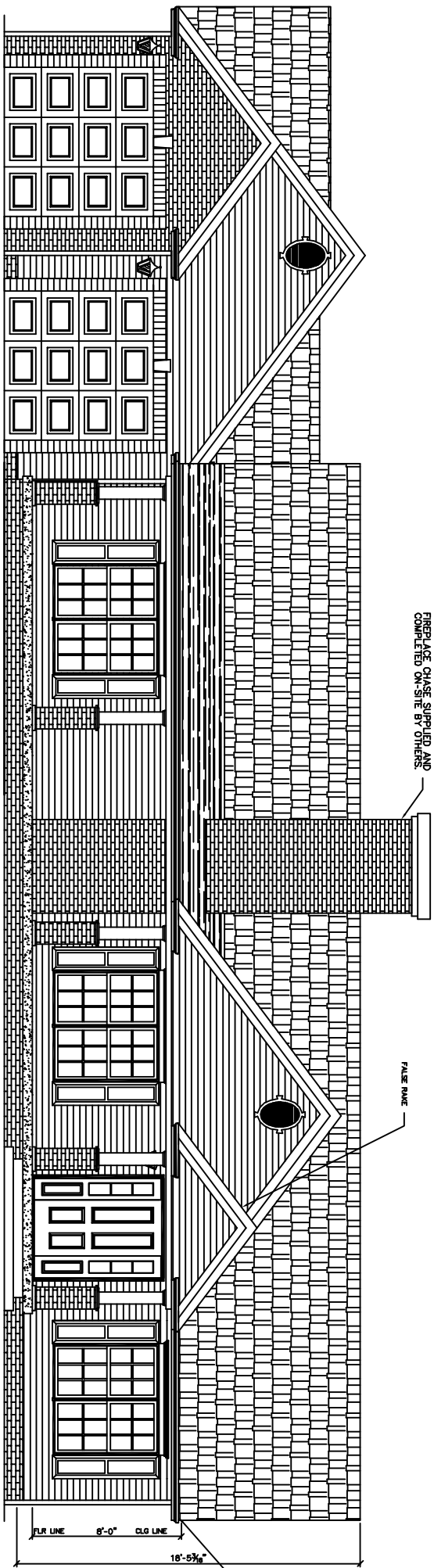
CUSTOMER/PROJECT:
BUILDER:

REV#	DATE	REVISIONS	BY
DRAWN BY:		DATE:	SCALE: 1/8"=1'-0"
			CHECKED BY:

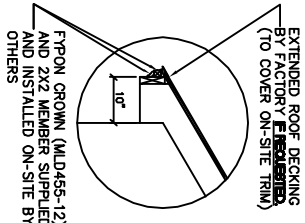
FILE:	
SQ.FT.:	1,733
STATE:	
TYPE:	
MODEL:	
DRAWING:	DILLWORTH
	1ST FLOOR PLAN
SHEET:	2

1. 2x6 EXT WALLS @ 24" O.C./2X8 MARK WALLS
2. 8'-0" CLG HT.
3. 2X10 SP#2 FLOOR JOISTS @ 16" O.C.
4. ROOF SYSTEM TO BE 24" O.C.
5. MW SINGLE HUNG MODULAR WINDOWS (#1=24210, #2=2842, #3=3046, #4=2852, #11=2856E)
6. 2x2 MPH WIND ZONE/ALL DOORS & WINDOWS MINIMUM DP 2x2 IN EXPOSURE
- 7.
- 8.
- 9.
- 0.





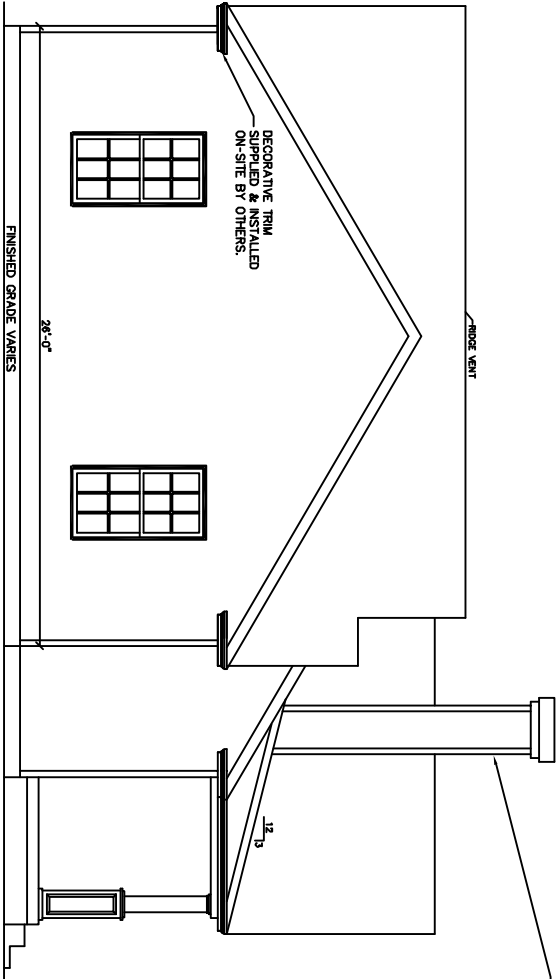
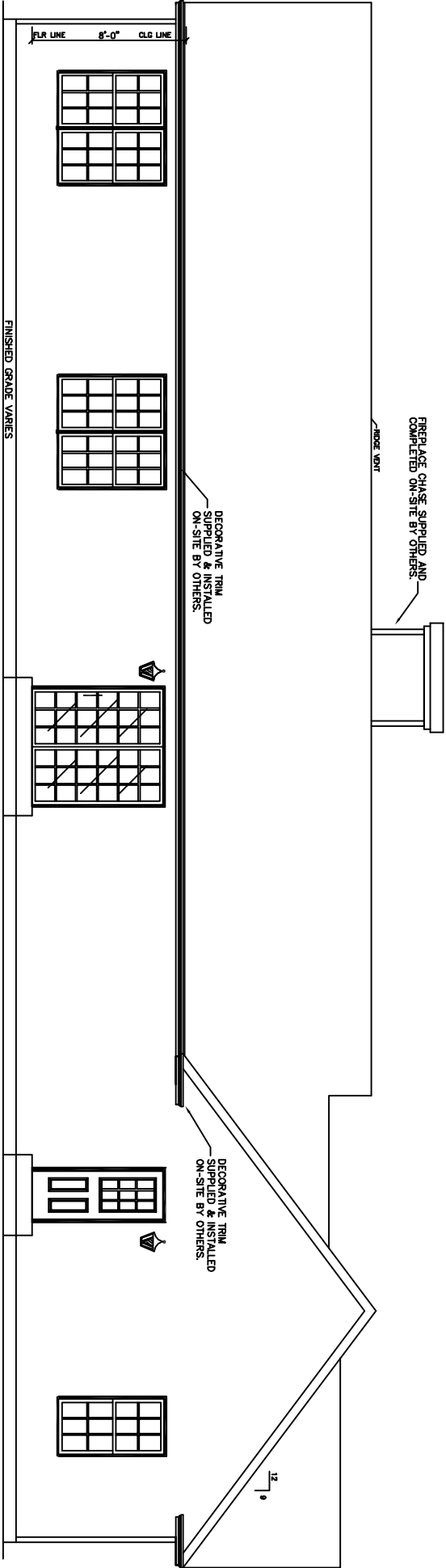
FRONT ELEVATION



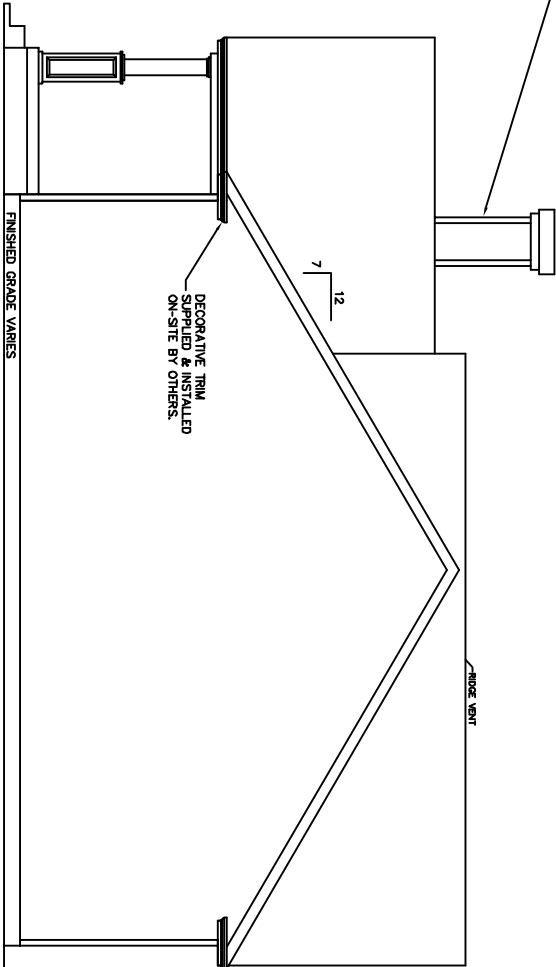
NOTE WINDOW HEADERS DROPPED 2" WITH WEBB TRUSSES AND FYPON OVER WINDOWS

- ROOF PITCHES -
- MAIN ROOF - 7/12
 - GARAGE - 9/12
 - PORCH ROOF - 9/12
 - SHED ROOF - 3/12

REAR ELEVATION



LEFT ELEVATION



RIGHT ELEVATION

NOTES:

ALL PORCHES DEPICTED IN ELEVATIONS ON-SITE BY OTHERS
OVERHANG LENGTHS MUST BE ADJUSTED TO ALIGN DUE TO MULTIPLE ROOF PITCHES

CUSTOMER/PROJECT:				BUILDER:			
REV#				DATE			
REVISIONS				BY			
DRAWN BY:				DATE:			
SCALE:				CHECKED BY:			
1/8"=1'-0"							
FILE:				ELEVATION			
SQ.FT.:				1,733			
STATE:				ALL			
TYPE:							
MODEL:				DILLWORTH			
DRAWING:				ELEVATIONS			
SHEET:				4A			



WEB SITE:
EXCELHOMES.COM

COPYRIGHT © 2006
THIS DOCUMENT AND THE SUBJECT MATTER CONTAINED HEREIN IS PROPRIETARY AND MAY NOT BE REPRODUCED WITHOUT THE WRITTEN PERMISSION OF EXCEL HOMES LLC